

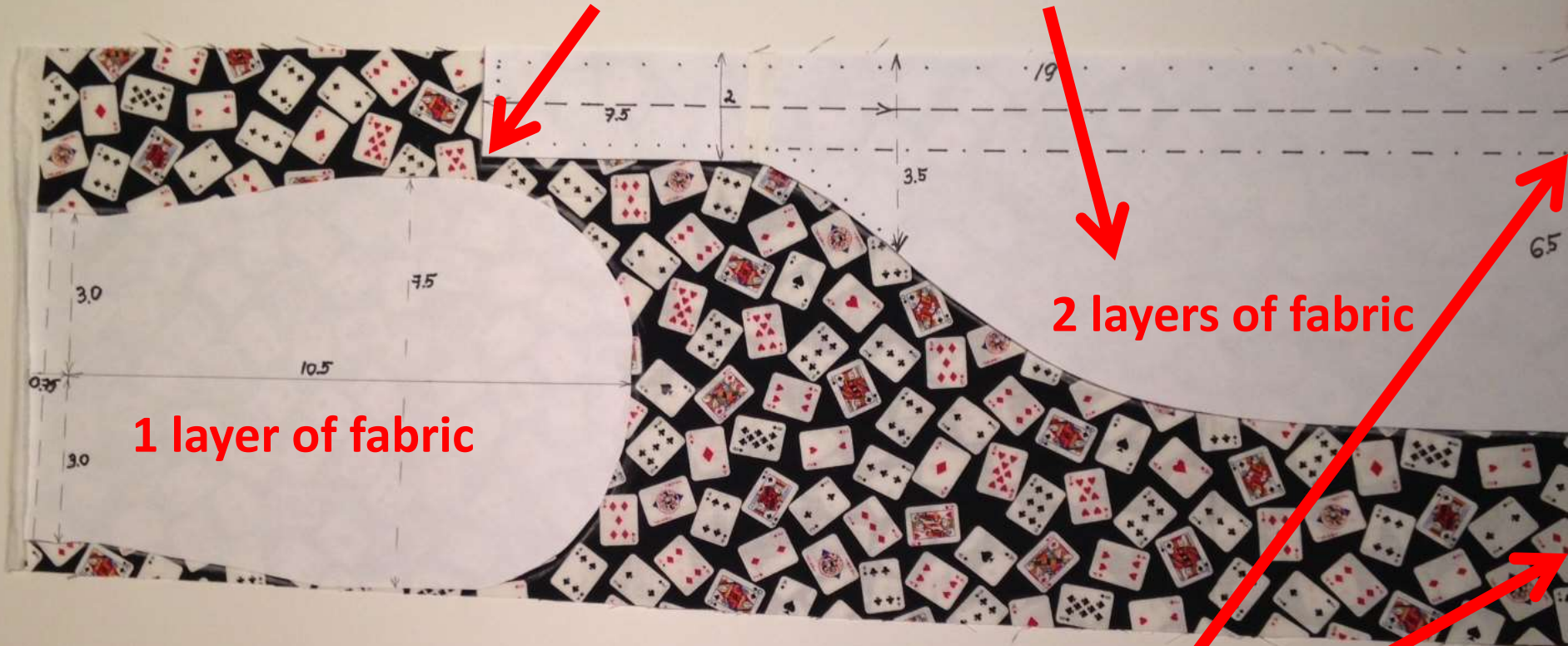
Surgeon's Scrub Cap – DIY Step By Step Tutorial



NO ADDITIONAL SEAM ALLOWANCE!!!!

Place side of the cap pattern on folded fabric

Second layer of fabric is below

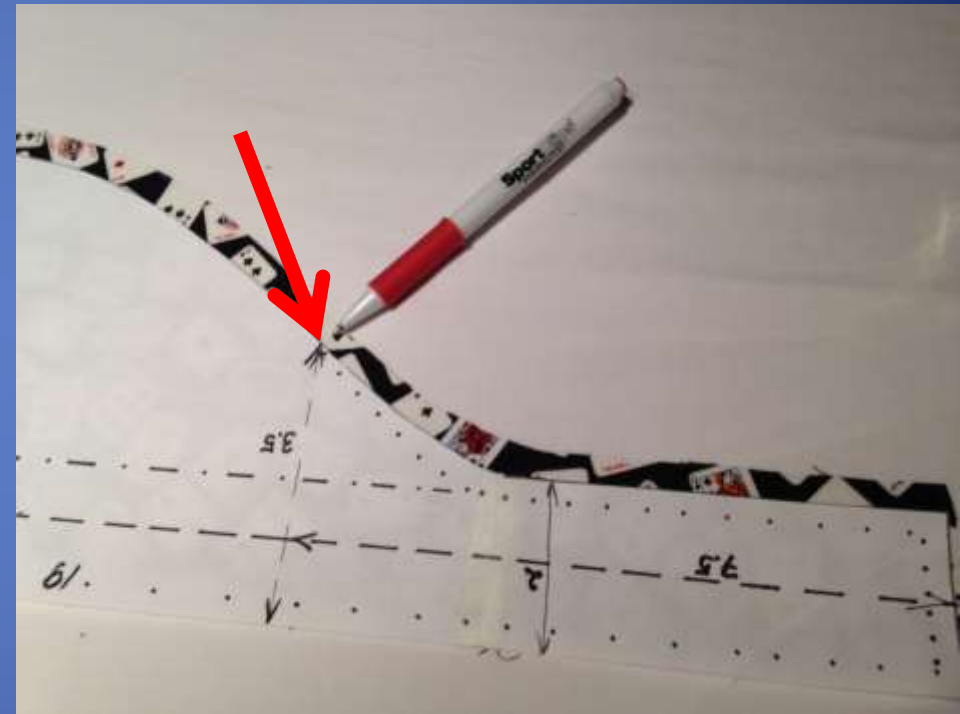
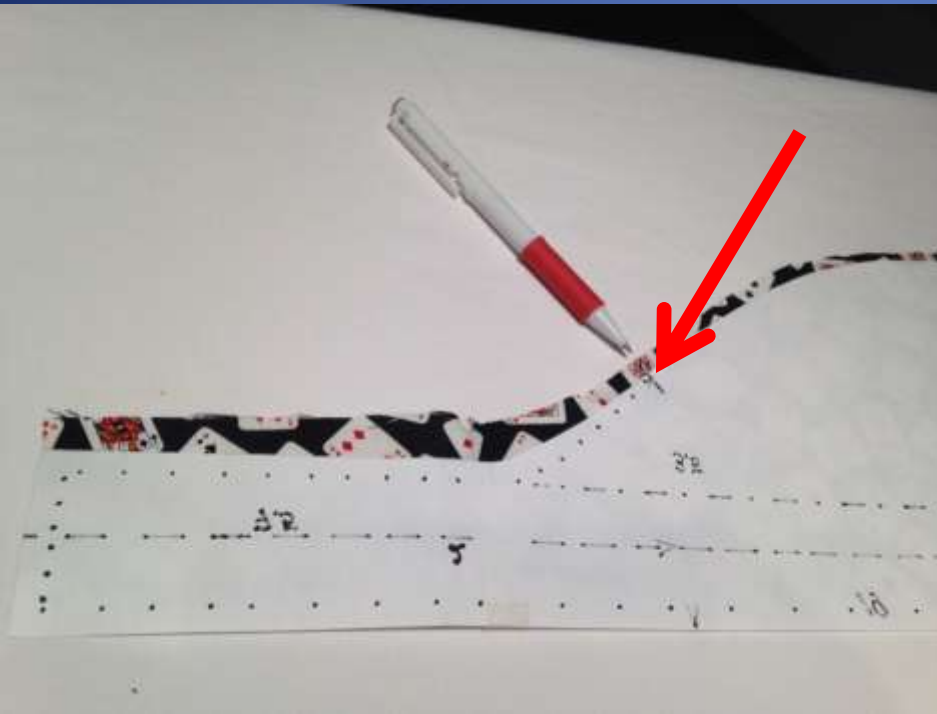


1 layer of fabric

2 layers of fabric

Fold fabric along this edge

Once you cut your fabric, make sure to mark where you will connect top part of cap to side part of your cap in the back



I used pins to mark where I will connect the top part of my cap to the side part of my cap in the back on both ends of the side part of my cap



Use hot iron to fold the curved edge of the side part one time, beginning at your pins and to the ends of side of cap part of your cap



Use hot iron to fold the curved edge the second time, beginning at pins in wider part and ending at beginning of straight end on both sides of side of cap part





Use hot iron to fold the edge at both short sides of straight ends and bottom of side part of your cap



Use zigzag stitch to secure curvy parts of your side piece between the pins





Use hot iron to fold bottom of side part of your cap toward wrong side of fabric making sure your ends are folded in two and edges are aligned





Use zigzag stitch to sew edges of ties of your cap together and bottom fold of your cap to the side part of your cap, starting at one end, going along the bottom of the cap and ending at the other end.

I use zigzag stitch because it will not break when my surgeon pulls on ends of his cap to tie the cap in the back in a hurry



Use hot iron to fold the bottom of top part of your cap first one time, then the second time to create a tube for elastic band



Iron to fold one time



Iron again to fold the second time



Use straight
stitch to
make a tube
for elastic
band



Cut 3 inches of elastic band and attach a safety pin to one end of it – next step is to secure elastic band inside the tube of fabric



Stick elastic band (safety pin first) into the fabric tube and move it toward the other end. When the end of elastic will align with end of your fabric tube, secure it with a pin



When your safety pin is out of the fabric tube and the second end of elastic band aligns with the end of fabric tube, secure elastic band with a pin

Once both edges of your elastic band are secured with pins, remove safety pin

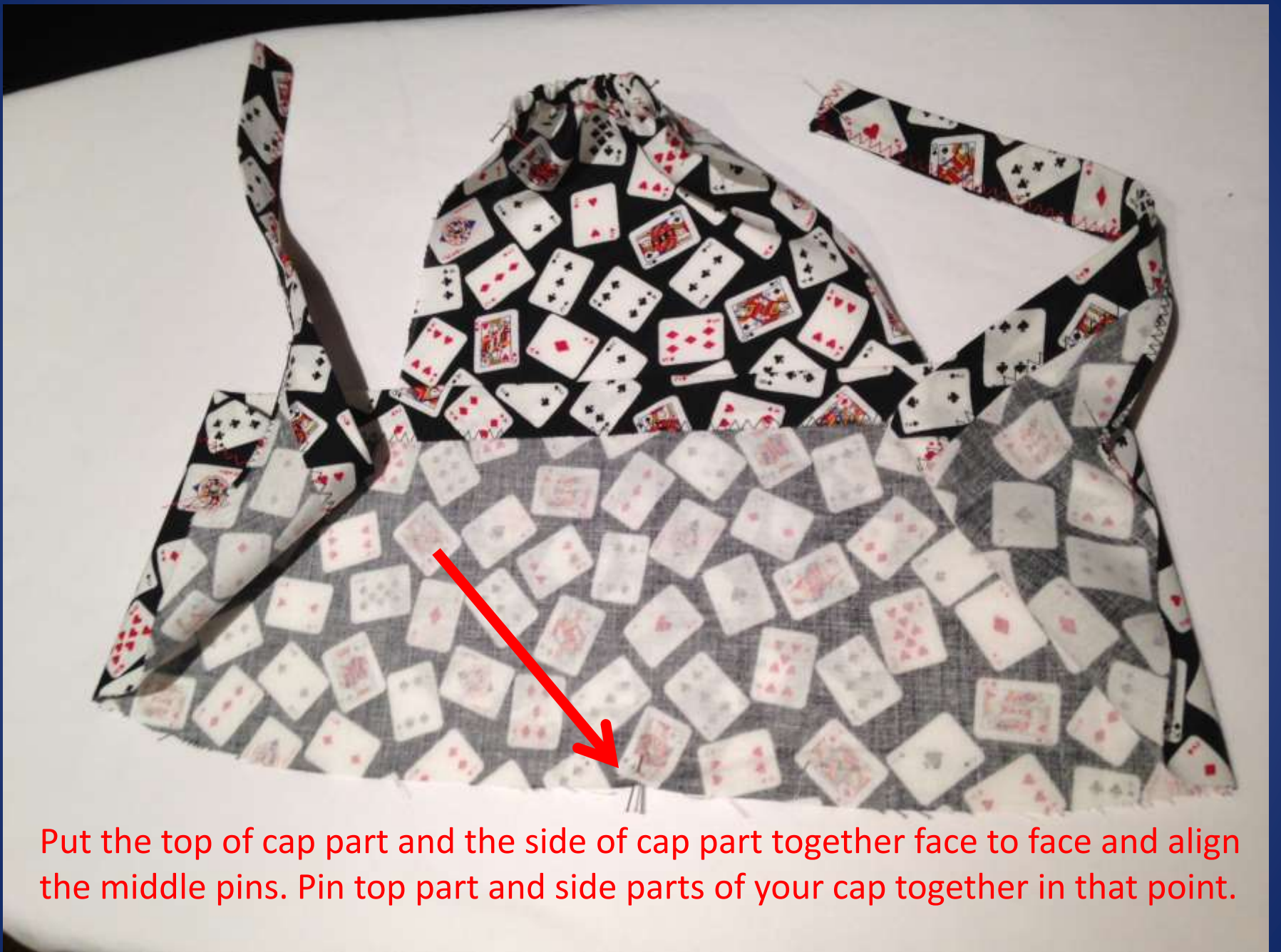




Fold the top of your cap part in two length wise, find the middle and mark it with a pin



Then fold the side part of your cap in two width wise, find the middle and mark it with a pin



Put the top of cap part and the side of cap part together face to face and align the middle pins. Pin top part and side parts of your cap together in that point.

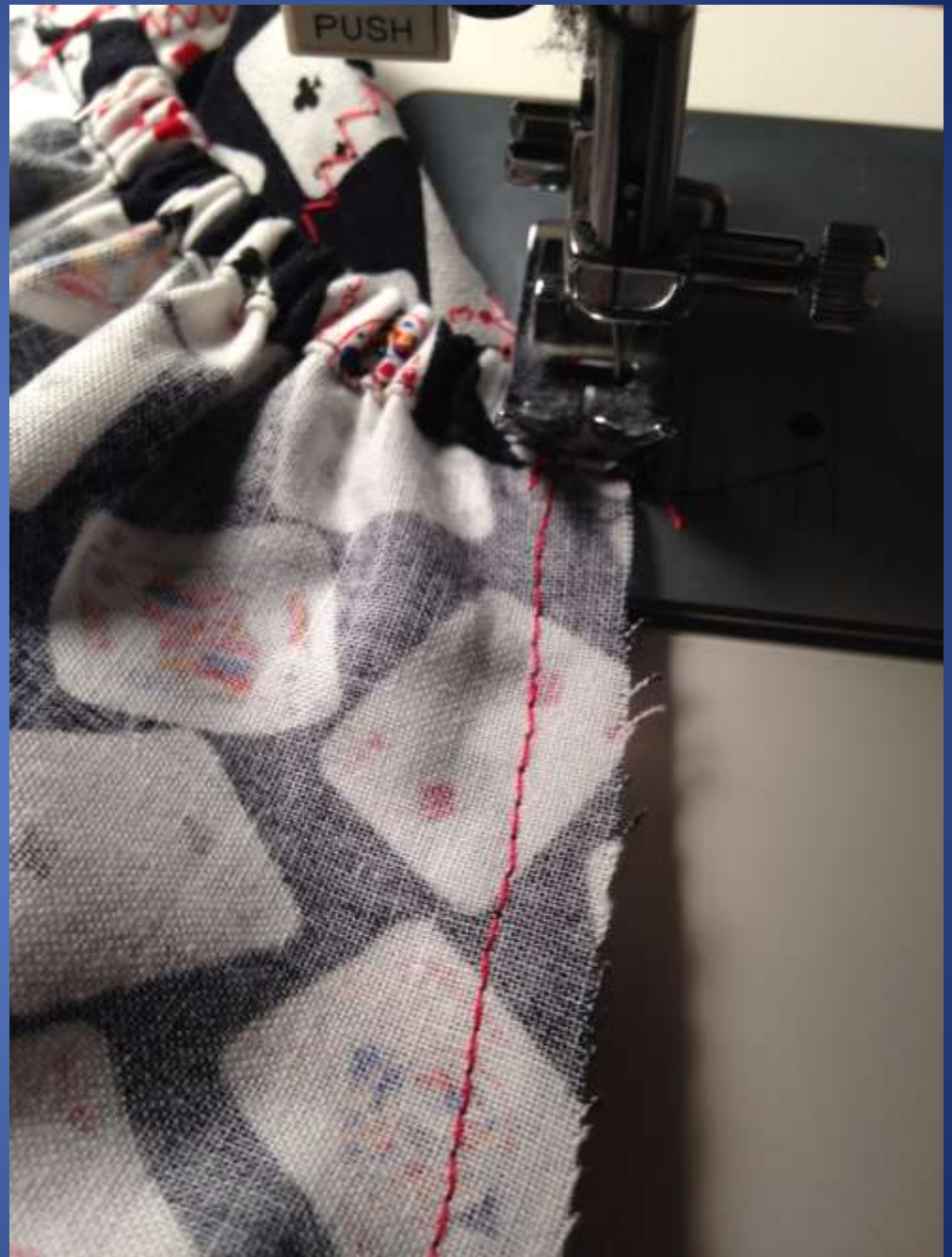
With side part of your cap being on top, pin it to the top part of your cap. Pins should be $\frac{3}{4}$ of an inch apart.





Use straight stitch $\frac{1}{4}$ inch from the fabric edge to connect the top part of your cap and the side part together – side part is on top. Pull pins out before they reach the needle. Use your fingers to hold fabric in place and together.

When you finish the straight stitch, flip the cap over, change settings to zigzag and stitch around the top of hat – keep your needle on the fabric



Do zigzag stitch
all the way
around the
connection of
top and side
parts of the
cap.



When you finish zigzag stitch, tie the ends of your threads into a knot and hide the tails into a seam using a hand needle – that's how I do it.



Use hot iron to iron the seam toward the side part of your cap



Starting at elastic band, make a decorative finishing stitch along the seam which connects top part of the cap to the side part of your cap.





Congratulations! This is your finished cap – this is how the back of your cap looks with ends tied together.